

# S-5!®

The Right Way!

The right way to attach almost anything to metal roofs!

CorruBracket™ Install

## Installation Instructions

**S-5!® Warning!** Please use these products responsibly! Visit our website or contact your S-5! distributor for available load test results. The user and/or installer of these parts is responsible for all necessary engineering and design to ensure the CorruBracket™ has been properly spaced and configured.

**Notice to S-5! users:** Due to the many variables involved with specific panel products, climates, snow melt phenomena, and job particulars, the manufacturer cannot and does not express any opinions as to the suitability of any S-5! assembly for any specific application and assumes no liability with respect thereto. S-5! products are tested for ultimate holding strength on various profile types and materials. This information is available from the S-5! website: [www.S-5.com](http://www.S-5.com). This document is an installation guide only and the photographs and drawings herein are for the purpose of illustrating installation, tools and techniques, not system designs. Information contained within is intended to apply to the document as a whole.

**The CorruBracket is made for corrugated roofing profiles. It is not made for folded seams and does not use setscrews. Screws used to secure the CorruBracket to roof and substrate will vary based upon specific project requirements and are not supplied by S-5!. For more information see proper hardware below and please consult your S-5! distributor.**

## Tools Needed

- Screw Gun (**for time saving tool recommendations contact S-5!**)
- Rag
- String Line

CorruBracket must be mounted directly over and into the supporting structure of the roof, i.e. wood decking, wood or steel purlins or trusses, NEVER into the metal roofing material alone.

To ensure brackets are installed in a straight line, install a single CorruBracket™ on each end of the roof at a measured, consistent distance from the bottom edge of the roof. Use a string line between the two brackets. Mount the remaining CorruBracket along the string line, directly into the supporting structure of the roof.

## Use Proper Hardware

Only use appropriate screws, and hardware when attaching this product into the supporting structure.



Not Provided

**Metal to Metal Screw Specifications:** 1/4-14 Self Drilling Screw - 1-1/2" to 2-1/2" Length - 3/8" Hex Washer Head - Zinc/Aluminum Cap



Not Provided

**Metal to Wood Screw Specifications:** 1/4-14 Type 17-AB Milled Point - 1-1/2" to 2-1/2" Length - 3/8" Hex Washer Head - Zinc/Aluminum Cap

## To Install CorruBracket™

1. Determine the location of the supporting structure of the roof. When possible, secure the CorruBracket using all hole locations; when not possible, always use the two upslope hole locations. The only surface preparation necessary is to simply wipe away excess oil and debris.
2. Peel the release paper from both bases, align, and apply to the clean area.
3. Secure the CorruBracket by drilling appropriate screws into the pre-punched holes and directly into the supporting structure of the roof. The CorruBracket is now ready to install ancillaries by using an M8 bolt. For critical attachment applications utilizing an M8-1.25 x 16 mm Hex Flange Bolt, tighten the M8 bolt to 160 inch pounds (13 foot pounds).

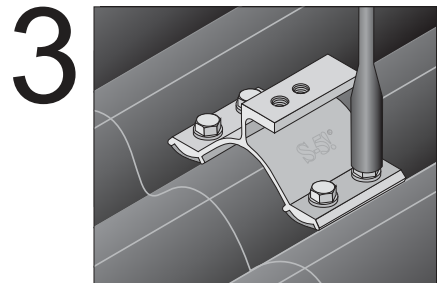
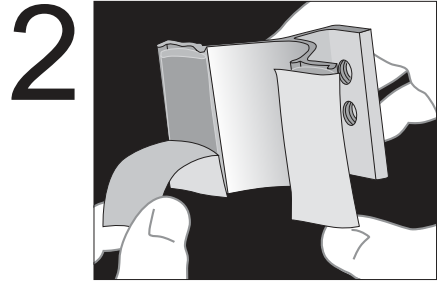
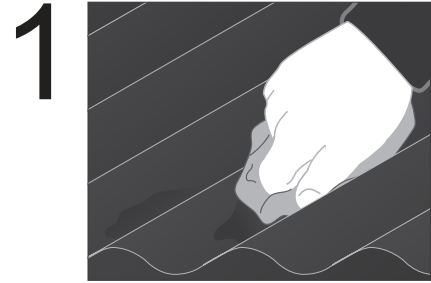
**S-5!® Warning! Please use this product responsibly!**

S-5!® Warning! Please use this product responsibly! Products are protected by multiple U.S. and foreign patents. For published data regarding holding strength, fastener torque, patents, and trademarks, visit the S-5! website at [www.S-5.com](http://www.S-5.com).

Copyright 2013, Metal Roof Innovations, Ltd. S-5! products are patent protected. S-5! aggressively protects its patents, trademarks, and copyrights. Version 072413.

These instructions are for use by those experienced in the trade. Always follow appropriate safety precautions and use appropriate tools.

CBI-V1.0-0915



888-825-3432 | [www.S-5.com](http://www.S-5.com)